



Shepherds Pool, Evesham, WR11 4JF

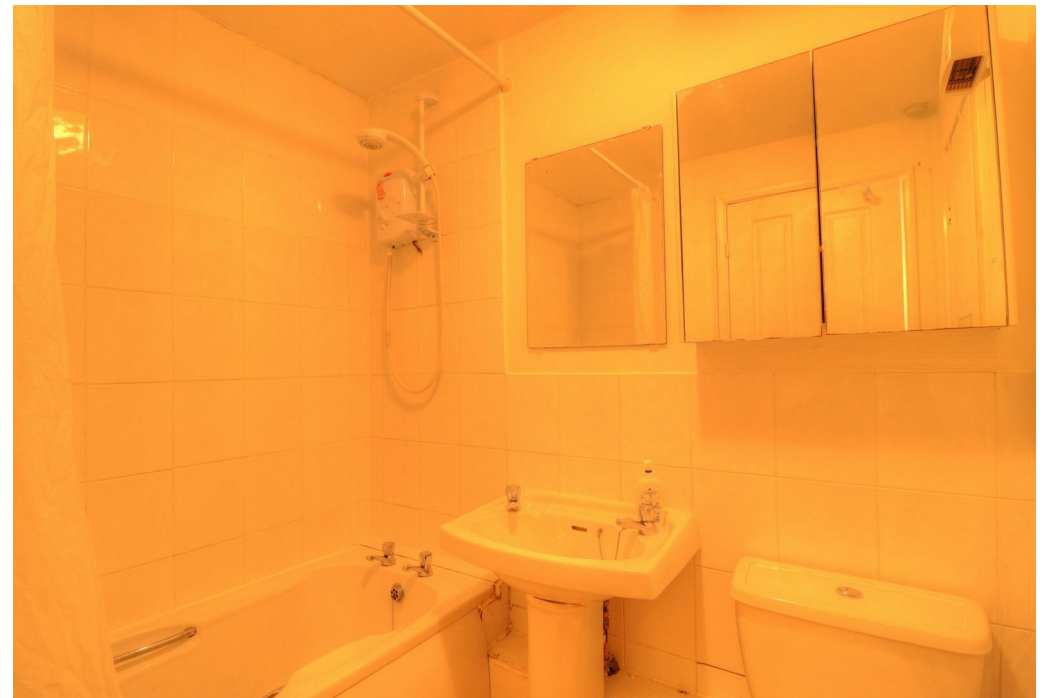
**SHELDON
BOSLEY
KNIGHT**

LAND AND
PROPERTY
PROFESSIONALS

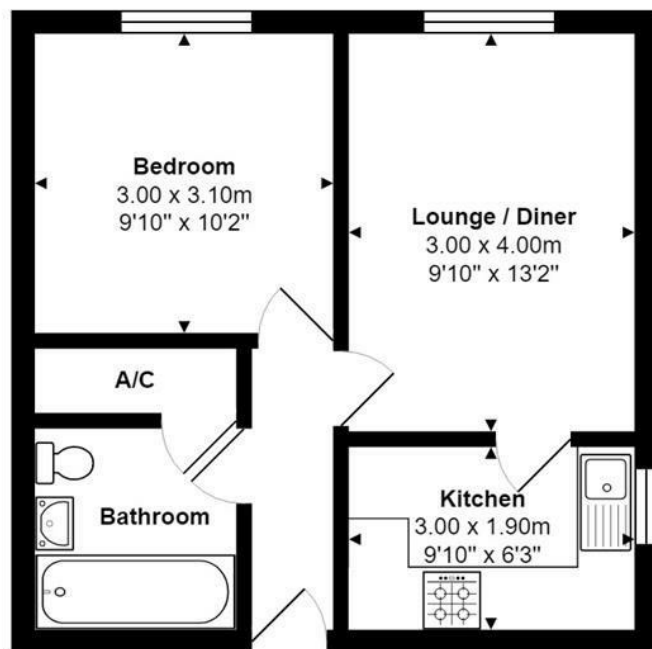
Property Description

AVAILABLE AUGUST First floor one bedroom apartment just a short walk from Evesham town centre and the train station. Accommodation briefly comprises; Communal door with stairs leading to first floor, door to reception room with feature electric fire and hearth, door to the kitchen with cupboard base units with matching wall cupboards over a four ring electric hob with built under electric oven, single drainer stainless steel sink unit with mixer tap with spaces for a washing machine and fridge/freezer, one double bedroom with a double glazed window to front, bathroom with white suite comprising of a shower over bath, pedestal wash hand basin, low flush WC and door to airing cupboard. The property further benefits from one parking space. Council Tax Band B. Energy Rating B. No Pets Allowed.





71 Shepherds Pool, Evesham, WR11 4JF



First Floor

Total Area: 37.0 m² ... 398 ft²

All measurements of doors, windows, rooms are approximate and for display purposes only.

No responsibility is taken for any error, omission or mis-statement.

The services, systems and appliances shown have not been tested and no guarantee as the operability or efficiency can be given.

Key Features

- AVAILABLE NOW
- Evesham
- One Double Bedroom
- Apartment
- Unfurnished
- One Allocated Parking Space
- Council Tax Band B
- Energy Rating B
- No Pets Allowed
- Initial 12 Month Tenancy

£575 PCM